

Give Because It Matters

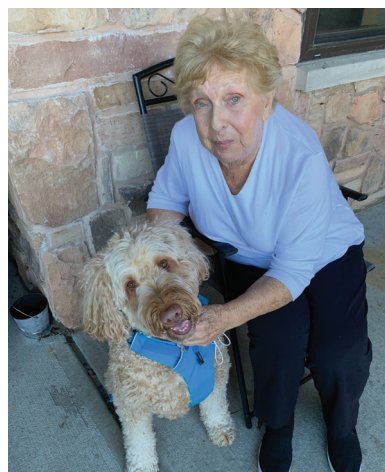


TABLE OF Contents



2	Programs & Services	10	Funding Our Mission
2	Those We Served	11	LSMNJ Foundation
3	Letter from the CEO	12	News & Notes
4	People Needing People	13	Social Media Snapshot
6	Volunteering at LSMNJ	15	2021 Donors
8	Caring for Our Elders	19	LSMNJ Leadership & Board Members

Program & SERVICES

AFFORDABLE HOUSING

- Birchwood at Old Bridge Senior Residence
- Lutheran Senior Residence at Pennsauken
- Lutheran Social Ministries of Camden
- Mirota Senior Residence
- Mt. Olive Manor I & II
- Peapack-Gladstone Family Housing
- Project Home
- South Plainfield Senior Residence
- Sterling Village*
- West Hanover Street Apartments

COMMUNITY OUTREACH SERVICES

- Community Engagement

- H.E.R.O.
- Immigration Legal Services
- Journey Hospice
- LSMNJ Disaster Recovery
- Lutheran Feeding Friends
- Lutheran Learning
- SpiriCare at Home

COMMUNITY RESIDENTIAL SERVICES

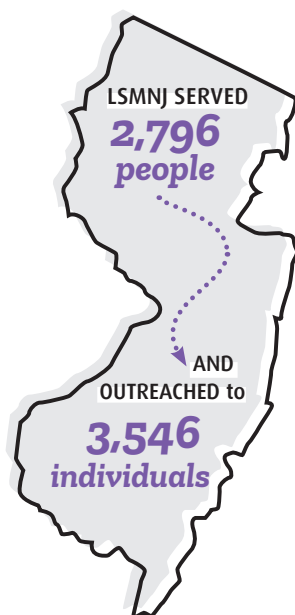
- Luther Haven

SENIOR HEALTHCARE & RETIREMENT LIVING

- Crane's Mill Continuing Care
- Lutheran Senior LIFE PACE Program at Jersey City

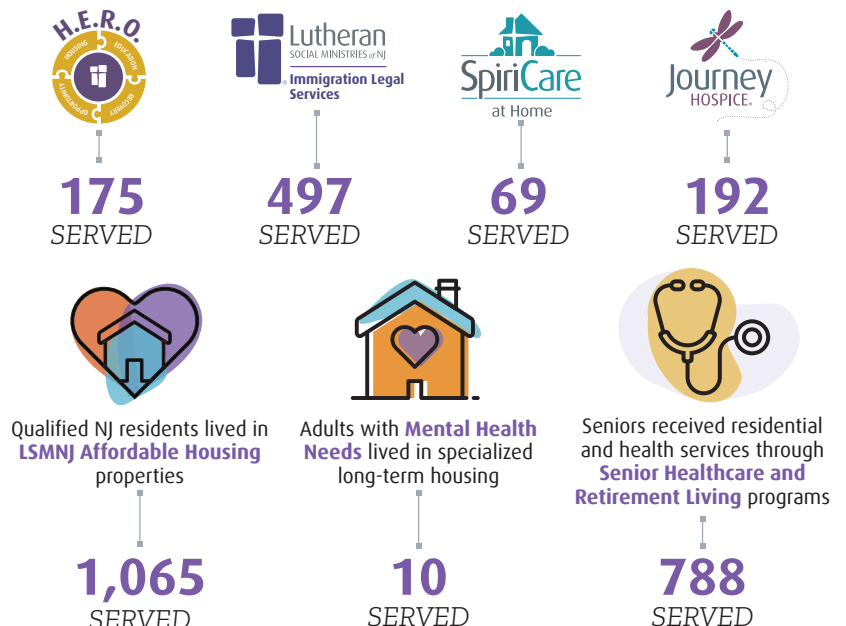
*Professionally managed by LSMNJ. All other facilities are owned and managed by LSMNJ.

PEOPLE SERVED IN 2021



AS PART OF
THE **MANY**
PROGRAMS
AND
SERVICES
IT PROVIDES
ACROSS THE
STATE.

The lives of New Jersey residents were improved through community services such as:





Today, it isn't difficult to find a cause to support that is close to your heart. There are non-profit organizations for just about everything from ocean preservation to disease research. Each with a mission, a goal, and a passion for making change.

Lutheran Social Ministries of New Jersey is no different. As a grace-filled, social ministry organization that has cared for those who hurt, who are in need, or who have limited choices in New Jersey since 1904, we strive to make lives better. Driven by our mission, we provide assistance to people of all ages, backgrounds, and faiths. We care for some of New Jersey's most disadvantaged families, as well as seniors in need of healthcare, housing, end-of-life care, and home care. But we cannot do it alone.

The importance of gifts—whether they be financial, in-kind, or gifts of time and talent—to a non-profit organization have infinite value. This year's report provides a glimpse into the numerous ways we are touched by those around us who make it their mission to give to LSMNJ through whatever means they can. We are blessed by many volunteers who connect with our clients, even in the midst of a pandemic. We are fortunate to have dedicated church and corporate partners who extend their reach through financial support, volunteer hours, and in-kind donations. There are also hundreds of individual donors that have a personal reason for supporting LSMNJ. They all give because it matters to the person on the other end of the lifeline, and it makes a difference in the lives of so many people.

And finally, let us not forget all of the LSMNJ employees who give of themselves each day. Like our donors and volunteers, they choose to be here. Working for a non-profit organization is a calling that comes with the biggest reward of all – personally making an impact in someone's life.

As New Jersey's needs change, we respond. Our purpose is to provide healing and hope to those who need it most. God has called upon us to serve others, and we appreciate that those who support us proudly share their love and compassion with us. Please take the time to read this report and share it with others to teach them about the work of LSMNJ and our mission. Be the inspiration for others to join us to help during these challenging times.

Colleen P. Frankenfield,
President & Chief Executive Officer, LSMNJ

People Needing People: *DONOR SUPPORT MAKES A DIFFERENCE*

LSMNJ donors give for different reasons—
but all of them seek to help those in need.



Janet Mehl enjoys reading in
her favorite spot on her deck.

MEET JANET MEHL

Janet Mehl, retired teacher and great-grandmother to seven, lives in Mount Holly, N.J., and is both a contributing member of St. Paul's Lutheran Church in Hainesport and a longtime supporter of Lutheran Social Ministries of New Jersey. We spent a lovely afternoon with Janet and her son, Scott, discussing her life, faith, fellowship, and the importance of helping others.

Born and raised in north Jersey, Janet grew up in a spiritual household. Her father sold piano rolls and worked as a milkman, delivering goods via horse-drawn cart; her mother was an executive secretary, a writer who published works in Christian publications, and an involved congregant in her local church. Displaying a faith that Janet describes as "not showy, just deep," her parents instilled a love of God and a sense of a higher purpose in Janet and her brother.

An avid reader since childhood, Janet gravitated to the teaching profession, graduating from Trenton State College (now The

College of New Jersey), where she met and married Karl. Before having her three children—Kurt, Susan, and Scott—Janet taught in Teaneck for one year and Union for two years. When Karl accepted a school principal position in south Jersey in the mid-1960s, the family moved to her current home and Janet eventually returned to teaching first grade. Sharing that she happily spent the next two decades fostering a love of learning in her students, Janet said, "When you become a teacher, you have creativity within you. With primary children, you have to change your routine. You want to explore their world with them. I loved teaching, and I miss it."

Committed churchgoers, the Mehl family donated their time, talent, and treasure. Karl and Janet were involved in their church's educational activities, and all the children were involved with Sunday School, Vacation Bible School, church groups, and youth groups. When St. Paul's, working with LSMNJ's immigration program, sponsored a large Vietnamese family who came to the U.S. after the Vietnam War, the Mehls were among those who helped them acclimate to their new country and develop their English-language skills. They welcomed them into their home



and shared fun experiences with them, such as trick-or-treating on Halloween. Such memories demonstrate how Janet's actions, then and now, reflect her firmly held belief that "people need people."

Referencing her lifetime connection with LSMNJ, whose mission is to serve those who hurt, are in need, or have limited choices, Janet recalled that her mother supported the original adoption home in Jersey City. Named the Waisenheimat Zum Kinderfreund, or Orphans' Home of the Children's Friend, the home was located at 93 Nelson Avenue and operated from 1904-1945, providing care for 423 children. The home was the genesis of what would become LSMNJ.

"Giving is not just about making a donation, it's about making a difference."

— Kathy Calvin, former United Nations Foundation President and CEO

her support. Before her husband passed away 15 years ago, Karl received hospice care; although the Mehls worked with a different hospice provider, Janet appreciates the vital work of LSMNJ's Journey Hospice.

As the discussion turned to the global state of affairs, Janet summed up why she supports LSMNJ and hopes that others do as well: "God intended that we work together and help each other."

Thank you, Janet, for doing just that!

In her later years, Janet's mother moved to the Lutheran Home in Moorestown, living there for almost ten years. Janet appreciated the care her mother received and was happy to lend

MEET THE REV. BLAKE A. SCALET

The Rev. Blake A. Scalet has served the congregation at St. John's Lutheran Church in Summit for the past ten years. As he jokes, "I came as an intern, and I never left." When reflecting on the relationship between St. John's and LSMNJ, Rev. Scalet noted that it stretches back decades.

"God has blessed us abundantly. We have a duty to care for others, and there's value in this work. Our church helps care for underprivileged seniors, families, women, and children. We work with our neighbors right here, and LSM helps us help others throughout the state of New Jersey. We had to work harder to do mission together during the pandemic because we couldn't be together. We desire to serve those in need. As a community, we strive to teach stewardship and benevolence to our youngest members. We do this by collecting backpacks at the start of the school year. This is something that families can do together and is tangible. We also collect funds and presents for seniors at Christmas to share with them the love of Christ. We know that we can do more together than we could ever do by ourselves."

Thank you, Pastor Scalet!



Pastor Scalet (center) with members of St. John's Lutheran Church in Summit, NJ.

MEET WSFS BANK

LSMNJ is grateful to WSFS for their continued support. Founded in 1832, WSFS is a multi-billion-dollar financial services company, and its primary subsidiary, WSFS Bank, is the oldest and largest locally-headquartered bank and trust company headquartered in Delaware and the Greater Philadelphia region. Their connection to LSMNJ dates back to Beneficial Bank's support starting in 2009 and has continued since WSFS acquired Beneficial in 2019.

Noting the company's belief that they have a responsibility to strengthen the cities

and towns where they live, work, play, and do business, Robert Juliano, VP, Director of Corporate Giving & Financial Literacy, shared the details of their commitment:

"The initiatives our grants have supported for LSMNJ range from general operations to the various programs supporting low-income communities in Camden. The WSFS CARES Foundation brings WSFS' mission of We Stand for Service to life across the communities we serve. The focus of the WSFS CARES Foundation is to help create a world in which all of our community members are given an equal opportunity to succeed. The WSFS CARES Foundation primarily supports nonprofit organizations that focus on community investment; affordable housing; revitalization and business economic empowerment; education and leadership development; and strengthening those in need."

Thank you, Robert and WSFS!



Robert Juliano (right) and fellow Team WSFS member assemble food bags for those in need.



Volunteering at LSMNJ: Sharing Your Time with Others is Priceless

Looking for ways to make a difference and give back to your community? Consider volunteering at Lutheran Social Ministries of New Jersey (LSMNJ)! There are countless ways for volunteers to support LSMNJ's mission, whether you're juggling a busy schedule and can only do a little, or you have all the time in the world. Every little bit helps, and there are more ways to get involved than you might realize. We've asked some of our volunteers to share their volunteering stories to spread the word about the many opportunities available to make a difference with LSMNJ.

Barbara Giaguinto visits patients at Journey Hospice North in West Caldwell, New Jersey. Though long aware of LSMNJ, Barbara first heard about Journey Hospice at a meeting of the Lutheran Women's Missionary League when a guest speaker from Journey presented to the group. As the speaker explained Journey's mission and needs, Barbara was moved to help, despite an already-full volunteering schedule. "I was so impressed by her words and her warmth—Journey seemed like a place where there was a lot of teamwork, like everyone was connected to each other," Barbara shares. "The culture, warmth, and connection all came through in the speaker's

presentation, and I wanted to be part of it, to be there for the people who were dying."

Unfortunately, the COVID-19 pandemic delayed Barbara's ability to start her volunteer work at Journey, but she finally started visiting patients in October 2021. For her, volunteering to sit or be with patients has given her some much needed reflection time. "I'm usually a 'doer,'" Barbara says, "but sitting quietly with people forced me to just be present without trying to control anything. It's taught me to be a better listener, to pray better, and to be flexible so I can be whatever I need to be in the moment." Barbara's advice for people thinking about volunteering? "That's an easy one—do it! Even if you think you're too busy, anyone can make a difference."

Service is a longstanding tradition for Bob Groeber, a former U.S. Navy hospital and combat corpsman. Bob, who's been volunteering with LSMNJ since early 2021, visits veterans in nursing homes throughout South Jersey with a program called "veteran cafes." "Veterans are often committed to lifelong issues surrounding the defense of our nation," Bob explains. "We want to make sure they understand that their service is appreciated. Visiting veterans in hospice is just one way to show we're there



Janet Thompson displays one of her custom-made memory bears created for a Journey Hospice family.



Bob Groeber, veteran volunteer for Journey Hospice, visits with fellow veterans during a Veteran Café program.

to do what we can for them.”

Though the pandemic added new challenges, especially with communication, Bob loves interacting with veterans and sharing different experiences. “We all come from different backgrounds and branches of service, but we’re connected by being veterans,” he says. “There are a ton of programs that serve veterans, but none of them would be able to do anything without volunteers. Reach out to a local organization and just let them know you’re there—they’ll have a good use for you!” Volunteering benefits more than just the people in need. “Visiting veterans helps them understand that they made a difference; it’ll give you a chance to learn and get those good feelings as well,” Bob says.

Janet Thompson, another Journey Hospice volunteer, uses her talents to bring joy to grieving families through the creation of memory bears. An LSMNJ volunteer for ten years, she incorporates cherished garments or sentimental items that reflect a deceased loved one into a special teddy bear created as a keepsake for bereaved family members. “I volunteered for this program because sewing is my passion,” Janet shares. “Now I can add volunteering to my list of passions; I’ve found that reaching out to people and helping my community is really enjoyable.”

After a personal loss, Janet realized that making memory bears was not just a nice thing to do for others. “It’s very healing for me now,” she says. “I feel a deeper connection to the work after my experience, and with faith and help from the one above, I’m so glad to do it.” She encourages anyone to bring their gifts to volunteering. “If you have a passion, consider how that passion could help the community as well. Just get involved and see where it takes you!”

Although Barbara, Bob, and Janet all volunteer with Journey

Hospice, their stories are unique and the ability to make a difference goes far beyond Journey. Opportunities to volunteer at LSMNJ can be found not only in our hospice program, but also within our senior care services, at our affordable housing locations, and at our food pantries in Camden and Pennsauken (the H.E.R.O. program), encompassing all aspects of LSMNJ’s diverse mission.

Karen Feldman, a social worker with Mt. Olive Senior Residence, one of LSMNJ’s affordable senior housing communities, works with a number of outside organizations who have chosen various ways to give back. “A local Catholic youth group sponsors ‘a year of birthday cheer,’” she explains, “providing cupcakes and cards for residents with birthdays that month. The residents love it! We’ve had a Girl Scout troop send support letters, and another group sent Valentines. A lot of our volunteers are kids and teenagers.” It’s not just local groups who step up, either. “We even have residents who volunteer their skills leading art or fitness classes—there really is never a limit on a person’s ability to make the world a better place.”

To learn more about needs near you and start a conversation about the best way you can help, reach out to Beth Gebhart at (609) 760-6073 or by email at bgebhart@lsmnj.org. Remember, volunteering a little of your time can mean so much! ■



In 2021, through the gracious efforts
of **228 individual volunteers**
and **39 groups**,
3,048 VOLUNTEER HOURS

were provided in support of LSMNJ’s mission.

Caring for OUR ELDERS: LSMNJ'S SENIOR PROGRAMS

New Jersey is home to an ever-growing number of senior citizens. More than three million NJ adults are aged 50 or older (more than a third of the state's population), with 16.6 percent of state residents over 65 years old. While the median income for seniors is higher in the Garden State than in other parts of the country (\$52,620), the elevated cost of living here makes it difficult for many seniors to live comfortably. Part of the problem is rising healthcare costs, which are especially challenging for the nearly one in three seniors who rely solely on Social Security to cover all their living expenses.

Senior citizens accounted for almost 20 percent of housing-insecure people in New Jersey in 2020—and the numbers just keep rising. Too often, even if they are able to maintain a roof over their heads, seniors are forced to make a choice between paying for needed medications and putting food on the table. Despite future plans to alleviate some of the many healthcare and housing issues elders face, the need is great right now. To meet these needs, Lutheran Social Ministries of New Jersey (LSMNJ) provides a diverse range of senior care programs, including six affordable housing locations, a program of all-inclusive care for the elderly, a senior health and retirement living community, a hospice and palliative care program, and a home care program.

LSMNJ's affordable senior housing locations provide a safe and secure rental option along with a sense of community to more than 600 low-income seniors in New Jersey. "Affordable housing options like these are important as a way to help seniors live comfortably and safely on their own," shares Chief Operating Officer, Sherry Outten. Ranging in size from 60 apartments to 150 apartments, each location offers handicap accessible living options along with close proximity to public transportation, shopping, and places of worship for seniors who meet age and income requirements as determined by state and federal agencies. "Some of our properties offer rent subsidies to assist with rental payments through HUD (Housing and Urban Development)," continues Outten. "Others are part of the state's Low-Income Housing Tax Credit (LIHTC) program."

Each affordable senior housing location has a dedicated property management team that is available during normal business hours to provide on-site maintenance, help ensure a clean and safe environment, and field resident concerns. Some properties also provide access to a social services coordinator who helps connect seniors to outside resources/services and sets up health and well-being

activities for the residents. The Pennsauken Senior Residence location even has a food pantry, providing free non-perishable items and personal care products to residents. Seniors residing in LSMNJ's affordable housing not only benefit from reduced rental costs, but also enjoy social interaction with other seniors and find comfort in knowing they can maintain their independence under the watchful eye of their neighbors.

Lutheran Senior LIFE at Jersey City, a Program of All-Inclusive Care for the Elderly (PACE) provided by LSMNJ, enables seniors to live independently at home. PACE is a nationwide program designed to meet the needs of seniors who require a nursing home level of care but wish to remain in their home. Though PACE is offered by providers across the country—144 programs in 30 states as of March 2022—many seniors and their families do not realize these services exist. Lutheran Senior LIFE manages all healthcare needs for those 55 and older who meet eligibility requirements and enroll in the program. The LIFE team takes a comprehensive approach to develop a care plan that meets each participant's unique medical, emotional, and social needs by providing health services, home care, adult daycare, rehabilitation, meals, spiritual care, and more. These services allow qualified seniors to continue living in their communities, surrounded by family and friends, while also receiving the care they need at every level.



We captured these proud new residents, Ezel Moore at South Plainfield Senior Residence (left) and Lydia Rudko at Mt. Olive Manor (right), as they moved into their affordable senior housing apartments.



"Caring for our seniors is perhaps the greatest responsibility we have. Those who walked before us have given so much and made possible the life we all enjoy." – Senator John Hoeven

Seniors seeking an active, independent lifestyle, companionship with other like-minded seniors, and a home that can help them transition through all stages of aging can take advantage of Crane's Mill retirement community in West Caldwell. From independent living and assisted living to rehabilitation services and skilled nursing, Crane's Mill provides a continuum of care for seniors and peace-of-mind that they can age in place comfortably. With a full calendar of events, easy access to nearby city amenities, and on-site five-star healthcare services, Crane's Mill covers all of its residents' lifestyle, health, and wellness needs.

Also located on the campus of Crane's Mill and available to all of its residents who need assistive care, LSMNJ offers SpiriCare at Home, a program covering a broad range of in-home services. Seniors who enroll in SpiriCare participate in a comprehensive collaborative process that assesses, plans, implements, coordinates, monitors, and evaluates the various options available to meet their needs and enhance independence and wellness in their home. These options can include companionship, meal prep, shopping, home health assistance, live-in care, and more—all available 24/7.

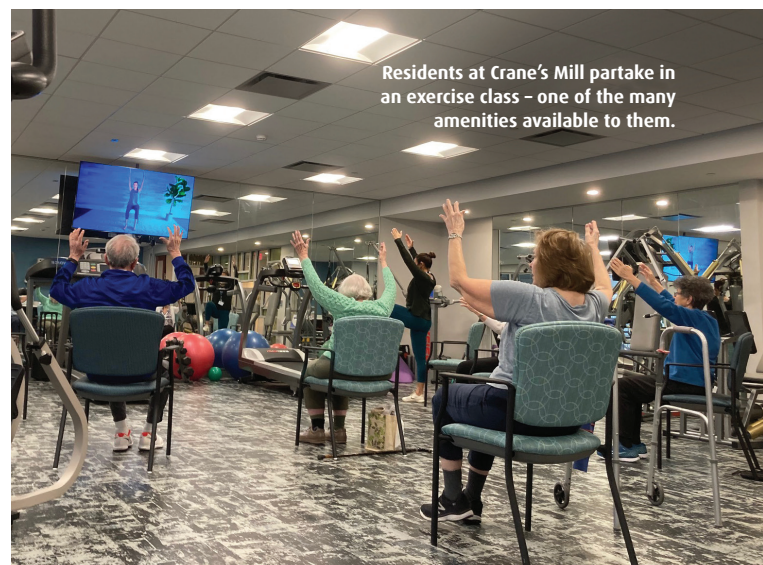
Much of what LSMNJ aims to do with any of the services it provides to seniors is improve one's quality of life. Providing a safe, affordable place to live, or offering a continuum of healthcare options in order to enhance an individual's overall health and wellness. So, it seems only fitting that LSMNJ would also provide palliative and hospice care services too. Seniors coping with chronic illness or nearing the end of life can take advantage of LSMNJ's Journey Hospice. With locations in Egg Harbor Township and West Caldwell, Journey offers personalized, compassionate care to patients and emotional support for their families. "Our team's goal is to help each patient live as stress free and as pain free as possible," explains Executive Director Darlene Thurber. "To us, this work is more than a job—it's a calling."

No matter what stage of life they're in, our seniors deserve to feel cared for and appreciated. That's why we started *Cherishing Our Elders*, an initiative that embraces seniors throughout LSMNJ's family of senior care programs. The initiative relies on the generosity of volunteers and philanthropic donors to provide our seniors with the necessities of life, including food pantries, personal care items, and grocery gift cards, as well as goodwill through cards, poems, letters, and heartfelt sentiments. Beyond the essentials, supporters and volunteers most importantly provide friendship. *Cherishing Our Elders* is a program that anyone can get involved in, whether you are part of a large group looking for volunteer opportunities or you have financial resources to share.

With a wide variety of programs ranging from affordable housing to in-home care, and with more than 1,600 seniors benefiting from our efforts across the state, LSMNJ takes our commitment to serving the needs of New Jersey's seniors seriously. As U.S. Senator John Hoeven has said, "Caring for our seniors is perhaps the greatest responsibility we have. Those who walked before us have given so much and made possible the life we all enjoy." Here at LSMNJ, we couldn't agree more! ■



Lutheran Senior LIFE participants enjoy a hot, nutritious lunch each day they attend the center, as part of the services provided by the PACE program.

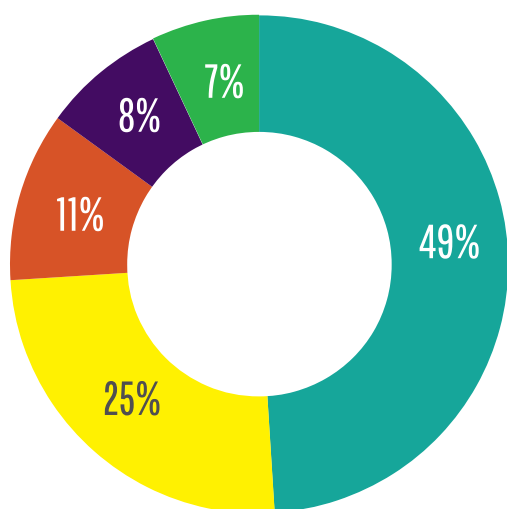


Residents at Crane's Mill partake in an exercise class – one of the many amenities available to them.



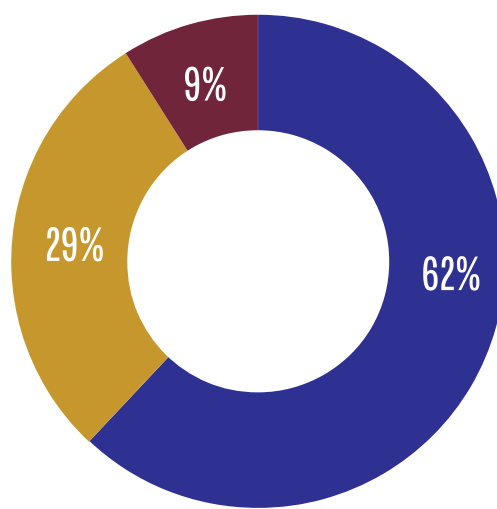
Funding Our MISSION

Lutheran Social Ministries of New Jersey operates as a 501 (c)(3) non-profit organization and is governed by a Board of Trustees which includes representatives from the clergy, churches, businesses, and other sectors of the community throughout New Jersey. We are committed to the responsible stewardship of all funds and programs. We offer this overview of revenue received and its use in support of our mission from January 1 through December 31, 2021.



TOTAL REVENUE:
\$54.4 MILLION

- SENIOR LIVING
- SENIOR SERVICES
- HOUSING
- HOSPICE
- COMMUNITY PROGRAMS



TOTAL EXPENSES:
\$58.8 MILLION

- RESIDENTIAL
- COMMUNITY
- GENERAL AND ADMINISTRATIVE



Engraved Bricks LEAVE A PERMANENT LEGACY

At Crane's Mill in West Caldwell, residents and visitors are led toward its entrance by a brick pathway that displays commemorative messages provided by supporters of the senior care community. Individuals purchase bricks to commemorate a special occasion, or to honor or remember a special loved one. Each brick is engraved with a personalized message and becomes a lasting memory for all to see. Money raised through our annual brick appeal is placed into the Good Samaritan Fund, which provides assistance to residents at Crane's Mill.



2021 proved to be another challenging year as a result of the COVID-19 pandemic.

However, the Lutheran Social Ministries of New Jersey Foundation, developed to oversee philanthropic activities and to advance the mission of LSMNJ, adapted to the changing times by hosting a virtual Feet in The Street fundraising event that grossed \$20,413. Vice President of Philanthropy, Alison Lauck, noted "With the help of our many corporate partners, as well as virtual attendees, we were able to raise vital funds to support LSMNJ's COVID Relief efforts and the H.E.R.O. program serving the underserved in Camden."

As COVID restrictions eased a bit in the Fall, two more popular LSMNJ events were held. The TopGolf Mt. Laurel event grossed \$23,647 and the TopGolf Edison event grossed \$26,977. In addition, various community-supported efforts aided families and seniors in LSMNJ's programs through food pantry donations, Easter, Thanksgiving, and Christmas food bags, as well as back-to school donations.

GRANTS & DONATIONS

Grants are funds given by an entity – frequently, a public body, charitable foundation, or a specialized grant-making institution – to an individual or another entity (often a non-profit organization) for a specific purpose linked to public benefit.

In 2021, the LSMNJ Foundation received the following grants:

- **The David and Marilyn Krupnick Foundation, Inc.** funded an Education Initiative in Camden which offers tutoring for all ages, including those who want to earn their GED or advanced education.
- **Friends of the Foundation for Aging** provided funding to build raised garden beds at Mt. Olive Manor Senior Residence so our residents with mobility concerns can enjoy the fun of gardening.
- **Evangelical Lutheran Church of America** provided funding for three area food pantries who were impacted by Hurricane Ida. The funds helped provide food, cleaning supplies and COVID testing / vaccination assistance.
- **WSFS Bank** provided funding to assist general operating costs.

To make a gift to the Lutheran Social Ministries of New Jersey Foundation, visit www.lsmnj.org and click DONATE or use the enclosed envelope to send your donation.





NEWS & NOTES



Renovation Progress at Crane's Mill

•Crane's Mill Retirement Community progressed into its next phase of renovations which included the hallways and lounges throughout its independent living area. Sycamore 1 received new carpeting, lighting, and the addition of a public bathroom, and lounges were renovated to include a game room, art studio, and quilting room. Further renovations to Sycamore 2 will continue this year. In Assisted Living, all corridors were updated and three, two-room suites were created to accommodate couples and siblings wishing to live together. Future renovations will include the corridors and common areas of Creekside, the community's main dining room and kitchen, as well as its café/grill.

Lutheran Services in America Recognition

• In April 2021 Lutheran Social Ministries of New Jersey was featured as a Frontline Hero Recipient by Lutheran Services in America for its courageous work in New Jersey. LSMNJ's story of serving NJ communities during the COVID-19 pandemic was honored alongside 43 other Lutheran member organizations across the country. In May, LSMNJ was also recognized as a Lutheran Services in America Micah Award Nominee. The Micah Award recognizes a member organization that is leading the way in its work in addressing justice, mercy, and equity. LSMNJ prides itself as a leader in race equity, inclusion, and diversity, and as an organization that exemplifies the spirit of Micah 6:8, "Act justly, and love mercy, and walk humbly with your God."



We Honor Veterans Designation

•With expanded services now offered in Essex and parts of Morris County, Journey Hospice experienced a 22% increase in admissions in 2021. Last year, Journey Hospice achieved Partner Level II recognition in the We Honor Veterans program and just advanced to Partner Level III in early April of 2022. To advance through partner levels, Journey Hospice delivers educational programs for veterans and their families, assists with resources regarding benefits and coordination of care, and honors over two hundred veterans across the state.



Recertification Achieved

•LSMNJ was proud to become recertified in 2021 as a Great Places To Work® organization. Certification is a two-step process that includes surveying your employees and completing a questionnaire about your workforce.



Adjusting to the Changing World

•During 2021, Lutheran Senior LIFE continued to adjust to the ongoing pandemic. Participants continued to receive most of their services through an adaptation of the home-based care model. They received medical visits, meals, rehabilitation services, and activities in their homes. Transportation was provided to safely transport participants to their medical appointments. By third quarter of 2021, participants resumed attendance at the Jersey City center, but were grouped in small cohorts on a limited basis. Expansion plans for Union County are under development to increase services to the poor, frail elderly through the provision of PACE services.



Five-Star Recognition from CMS for Crane's Mill Health Center

•A five-star rating is difficult to achieve and maintain, yet Crane's Mill Health Center has been receiving five-stars ratings since 2016. Within a 25-mile radius of the community, only one-third of nursing homes can claim the five-star designation. According to medicare.gov, the overall rating is based on a nursing home's performance in three key areas: health inspections, staffing, and quality of resident care measures. The health center provides assisted living, nursing care, rehabilitation, and memory support.



GET SOCIAL WITH US

We love to interact with friends and supporters from across the state. Many of our programs have their own social media presence across several channels. 'LIKE' and 'FOLLOW' the programs you enjoy, so you can connect with us all year long. **Here are some of our most popular posts from 2021.**



Journey Hospice NJ

May 7, 2021

Journey Hospice North, located in West Caldwell, NJ, hosted a Mother's Day Tea for the residents of Crane's Mill Retirement Community. The ladies enjoyed live musical entertainment from the 50s and 60s while finger sandwiches and scones were served. A gorgeous May afternoon spent outdoors with other residents.



Lutheran Social LIFE at Jersey City-- A PACE Program

March 12, 2021

At PACE at Jersey City --An alternative to nursing home care, we're working hard to keep you safe. We have vaccinated over 54% of our participants against #COVID-19 and will continue to administer vaccinations throughout the month of March.



See more Social media posts on page 14.



Lutheran Social Ministries of New Jersey

Aug 19, 2021

WOW! We're celebrating Erna Jaklitsch's 100th birthday with her friends and family at Mt. Olive Manor senior housing in Flanders, NJ. Help us in congratulating Erna on this very special occasion. Erna has been a resident at Mt. Olive for nearly 12 years and is very active in our community. She was born in Schalkendorf, near the city of Gottschee, Yugoslavia and came to the U.S. in 1939. Erna has 3 children, 6 grandchildren, 6 great-grandchildren - with a 7th on the way in October. She loves books, music and the game show, Jeopardy. Happy 100th Erna!

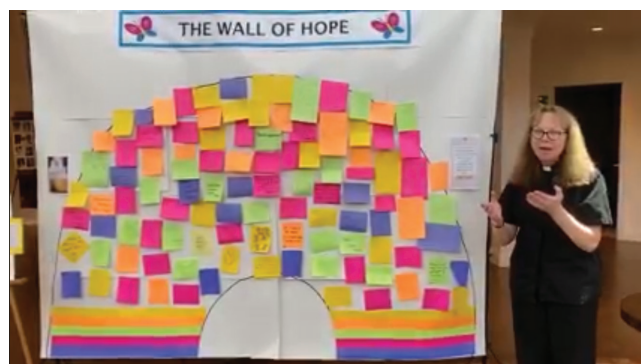


Crane's Mill

June 3, 2021

Pastor Nancy Truscott of Crane's Mill presents the community's Wall of Hope, a project that spanned the entire campus including residents and staff in all levels of care and all departments.

The colorful messages, located in Towne Square, range from simple thoughts and quotes to prayers, poems, pictures, and more.



Lutheran Social Ministries of New Jersey

March 31, 2021

Grateful residents at Lutheran Social Ministries of Camden, an affordable family housing community, received Easter food bags from generous donors and congregations who support LSMNJ. This year we were able to hand out 50 Easter food bags.



Lutheran Social Ministries of New Jersey

October 21, 2021

Our Lutheran Learning educational series is a still actively providing educational offerings to Lutheran churches across the state. This most recent program at Lord of Life in Tabernacle gave attendees an understanding of the importance of volunteering. In turn, attendees helped paint rocks that will be given to New Jersey veterans through Journey Hospice, a partner of the 'We Honor Veterans' program.



CHECK THE LIST BELOW AND CONNECT WITH US TO SEE THE LATEST NEWS AND UPDATES.

FACEBOOK

- LUTHERAN SOCIAL MINISTRIES OF NJ
- CRANE'S MILL
- LUTHERAN SENIOR LIFE AT JERSEY CITY
- JOURNEY HOSPICE NJ
- LSMNJ DISASTER RECOVERY
- FEET IN THE STREET

TWITTER

- LSMNJ- @LSMOFNI

INSTAGRAM

- LUTHERAN SOCIAL MINISTRIES OF NJ- @LSMNJ
- FEET IN THE STREET- @FEETINTHESTREET_LSMNJ

LINKEDIN

- LUTHERAN SOCIAL MINISTRIES OF NJ
- CRANE'S MILL
- LUTHERAN SENIOR LIFE AT JERSEY CITY
- JOURNEY HOSPICE NJ

THANK YOU TO OUR 2021 Donors

Lutheran Social Ministries of New Jersey gratefully acknowledges the significant financial contributions and in-kind gifts made by individuals, organizations, and congregations across the state. Collectively, your contributions have a tremendous impact on families and seniors within our programs and allow us to continue to meet the needs of those we serve. This listing recognizes donors who provided gifts from January 1, 2021 to December 31, 2021.

A

- AARP Foundation
- AllRisk, Inc.
- Kristopher Almquist
- Amazon Smile Foundation
- Larry Ambrose
- Karen Amundson
- Stuart Anderson
- Jessie Andrews
- Anonymous
- ARC Foundation
- Roger and Nona Arnholt

B

- Kerrie Balma
- Cyrus and Joyce Baltus
- Cynthia and George Barth
- Tracie Bartholomew and Daniel Whitener Jr.
- Janet Bear
- Wayne and Jeannie Becker
- Robert and Shirley A. Beers
- Estate of Robert A. Bell
- Sharon Benson
- Barbara Bernstengel
- Frederick and Shirley Bernthal
- Ellen Berntson
- Edward and Joanne M. Berryman
- Miriam Bisbing
- John and Sharon Black
- Carolyn Bodmer
- Joyce Bohnenberger
- Frank Boren and Alice Tucker

- Denise Brandon
- Estates of George and Olive Brauningner
- Lorraine Brunelle
- Jack Bryant and Kevin Shumaker
- Henry Buchy
- Max and Christine Burger
- David and Peggy Burke
- Anne Burrows

C

- C & C Construction Management
- Estefania Calis
- Calvary Lutheran Church, Cranford
- Sharon Campbell
- Kimberly Capone
- Thomas Cappadona
- Anthony Cappuccio
- Carl and Margaret Carlson
- Richard Carter
- Tracey Cavacino
- Gene and Toby Jo Caven
- Vincent Celenza
- John and Kathy Chapman
- Christ Lutheran Church, Woodcliff Lake
- Christ the King Lutheran Church, Ringwood
- Elizabeth Christian
- Victoria and Daniel Christian
- Robert Clark
- Jon and Abbey Cofsky

- Robert and Jean Cook
- John and Joanne Correia
- Francis Costenbader
- Nancy Cottingham
- Stacy Cox
- John Crable
- Crane's Mill Residents' Association
- Jason Crawford
- Naomi Cressman
- Anne Cvicker
- Martin and Martin Czebotar

D

- Kathleen D'Agui
- Kelly Daly
- Lila Dans
- David and Susan Danton
- Amabelle Daplin-Stech
- James D'Arcy
- Maxine Davis
- Norman and Kathleen Davis
- Anne Dawley
- Del Sano Contracting Corp.
- Beverly Delaney
- Antoinette Di Paula
- John Diamond
- Stacy DiDonato
- Kevin Diduch
- Thomas Diedrich
- John and Jeanne DiFabio
- Doris B McCluskey Charitable Remainder Trust

- John and Joan Drager
- Melissa Dulin
- Louis and Carleen Dunkle
- Laura Dvorin

E

- Eugene and Mildred Eberenz
- Marc and Kathleen Edenzon
- Thomas and Jeanne Eisele
- Nancy and Raymond Elliott
- Lakisha Ellis-Yusuf
- Thomas Emmons
- Raymond Eriksen
- Robert Espenschied
- Jean Esposito
- Evangelical Lutheran Church in America
- Timothy and Noreen Ewing
- Diana and Cartney Ezyk

F

- Barbara Farlie
- Carol Fay
- Luba Fedash
- Marina Ferrer
- Arlene Ferrigno
- Annemarie Fiechter
- Joseph Fierko
- Linda Fieros
- Bob and Kathy Fiscella
- Dale and Kori Fjordbotten
- Thorleif Floystad
- Carolyn Foley



This incredible young adult, Taylor, coordinates food collections for LSMNJ food pantries by asking neighbors to help those in need.

- Rita Forlenza
- Christine Franco
- Donald Frank
- Colleen and Joseph Frankenfield
- Matthew and Clare Freimuth
- Harold Friedeman
- Beverly Friedman
- Cheryl Friedman
- Friends of the Foundation for Aging
- Joe Frigiola

G

- Garden State Painting & Design Corp.
- Garden State Trust Company
- Sharman Geathers
- Michael and Elizabeth Gebhart
- Gethsemane Lutheran Church, Hackettstown
- Stephen Gewecke
- Doris Gilmour
- Giordano, Halleran & Ciesla
- Gloria Dei Lutheran Church, Ramsey
- Joan Gmitter
- George Golia

- Good Shepherd Lutheran Church, Somerville
- Good Shepherd Lutheran Church, Holmdel
- Good Shepherd Lutheran Church, Florham Park
- Good Shepherd Lutheran Church, Point Pleasant
- Anita Goodwyn
- Herman and Gertrude Gossenberger
- Grace Evangelical Lutheran Church, Phillipsburg
- Grace Lutheran Church, Teaneck
- Grace Lutheran Church, Livingston
- Robert and Patricia Gray
- Barbara Griffa
- Jane Griffith
- Victor Groisser
- Nancy and Richard Gromen
- Gay L. Guest
- Ingrid Gutjahr

H

- Rafael Haciski
- Alice Hamm
- Arlene Hard

- Estate of Margorie Harper
- Harry L. Dubel Residual Trust
- David Hart
- Elvira Harting
- Virginia and Ralph Hartman
- Ruth Harvey
- Mary Jane Hastings
- David and Carol Hauser
- Charles and Elizabeth Heal
- Edna Hecht
- John and Dorothy Heflich
- Margaret Heglie
- Udo Heiman
- Nancy Heinze
- Frances Herbst
- Michelle and Robert Herbster
- Estate of William C. Herdle
- Patricia Hight
- Margareta and Buford Hill
- David and Claire Hogenauer
- Charles and Patricia Holden
- Joseph Holden
- Charles Holmes
- Holy Communion Lutheran Church, Berlin
- Holy Trinity Evangelical Lutheran Church, Manasquan
- Holy Trinity Lutheran Church, Hasbrouck Heights
- Holy Trinity Lutheran Church of Union, Scotch Plains
- Cathy Homberg
- Hope Lutheran Church, Freehold

I

- Investors Foundation
- Joan Iris
- Marilyn Israel

J

- Krista Jacobs
- Otto and Gloria Jacobson
- Erna Jaklitsch
- Doris Jankowicz
- Tom and Donna Jennings
- Mary and Mark Johannesen
- John and Rina Johnson
- Mary Ellen and William Jones
- Philip Jones

K

- Andrew Kalnin

- Robert Kammerer
- Linda Kassekert
- Kathe Kasten Charitable Remainder Trust
- Heather Kato
- KDA Architects
- Barbara Kelly
- Mr. and Mrs. James Kelly
- Joyce Kennedy
- Donald and Edna Kline
- Beth Kohler
- Lois P. Kopf
- William and Joan Kramer
- Richard and Mary Kathryn Krattenmaker
- Joe Kreps
- Edward and Holly Kropinack
- Glenn Kruhm and Karen Peters- Kruhm
- Gina Krumanocker
- James Kuder
- Edwin Kunkel
- John and Elsa Kunna
- Jeffrey Kuschner

L

- George and Carol Labadie
- Maria Lagattuta
- Doris Lail
- Charles and Maureen Lange
- William and Carol Lankenau
- Alison and Ron Lauck
- Donna Lauck
- Pat Leemann
- Mary Lehmann
- John and Ashley Lentini
- Kathryn Licata
- Joan Liljegren
- Alicia Lintag
- Living Waters Lutheran Church, Ringoes
- Larrie and Mallory Loehr
- Lorraine Loesser
- Steve and Lois Loevner
- Lord of Life Lutheran Church, Tabernacle
- Germaine Loudon

M

- Cynthia Mackalonis
- Genevieve Mager
- Denise Mahoney



- David B. Malkin
- Carl and Catherine Malmstrom
- Edward and Sharon Mann
- Jim and Marguerite
- John and Regina Mapes
- Dina Martin
- Bernice Mayer
- Douglas McCabe
- John and Kathleen McCann
- Barbara McCorkindale
- Albert McDonald
- James and Kerry McGuire
- Joseph McHugh
- Consuela "Peaches" McKinley
- Steven McMickle
- Estate of Jean McNally
- Lydia McNally
- Elizabeth Meeker
- Thomas and Joanne Meeker
- Janet Mehl
- Christine Messina & The Coley Family
- Mary Messina and Eric Beetham
- Thomas and Donna Messina
- Alda Metz
- Therese Millar Kennedy
- Charles N. Miller Jr.

- Judy Miller
- Jean Minder
- Joseph and Elaine Molnar
- Peter and Maria Montenegro
- Carole Moore
- Roy Mueller
- John Murray

N

- Nativity Lutheran Church, East Brunswick
- Christopher S. Nee
- Elaine Neely
- Linda and James Nelson
- Network For Good
- New Jersey Synod of the ELCA
- Linda Nietman
- NJM Insurance Group
- Tina Nugent
- Frederick Nurge
- Nutrition Management Services Company

O

- Old York Cellars
- Joann Olsen
- Janice O'Neil

- The Harold A. and Katherine K. Ott Memorial Fund II of InFaith Community Foundation
- Our Redeemer Lutheran Church, Fords
- Our Savior Lutheran Church, Fair Lawn
- Our Savior Lutheran Church, Stanhope
- Our Saviour Lutheran Church, Pompton Plains
- Sherry Outten
- Martin Oxenhorn

P

- Antonio Paez
- Frances Parodi
- Anthony Passarelli
- Brian and Laura Peebles
- Carlton and Patricia Penn
- Elaine Perlov
- Linda Perry
- Joy Petzinger
- Philadelphia Foundation
- Reinhard Piater
- Pinelawn Cemetery Land Purchase Fund
- Rhonda and Charles Pisano
- Fritz and Doris Plenefisch
- Michele Plunkett
- Aili Pogust
- J. Andrea Porter
- Premier Energy Group, LLC
- Suzanne and Douglas Price
- Prince of Peace Lutheran Church, Princeton Junction
- William and Marsha Proehl
- Pure Play Every Day

Q

- Fred and Karen Quadrio
- Arthur and Meta Querns

R

- Thomas and Laura Ragusa
- Eugene and Judith Randazzo
- Arthur Ranges
- Lakiya Reid
- Warren Reintzel
- Frank and Patricia Rekosik
- Carl Ressler
- Albert Ricciardi

- Jeannine Richman
- Martha Rimathe
- Robert and Carol Ritter
- Randy Ritzer and Annamarie Camporeale
- Andrea Robinson
- Matthew Roddy
- Kenneth and Christine Rodemann
- Chelsea Rojas
- Roma Bank Community Foundation
- Craig Roscoe
- Navanique Rowe
- Barbara Rucker
- Juhan and Jeanne Runne
- RunSignUp
- Shirlee Rykiel

S

- James and Teresa Sabetta
- John Salsbery
- Daniel and Leslie Sato
- Janet Satterthwaite
- Dennis and Debra Scanlon
- Ede Lou Schaertel
- Lois Schnell
- David and Eileen Schoenherr
- Steven Schultz
- Lawrence and Linda Schumann
- Susan and David Sereni
- George and Jane Sheer
- Shehadi Commercial Flooring
- Mike Sherman
- Terry and Georgina Shine
- Shop Rite of Cherry Hill
- Frederick and Sandra Shourds
- Beth Simons
- William Slade
- Anna Smith
- Frederick Smith
- LeeAnn Smith
- Nicole Smith
- Robert and Dorothy Smith
- Stella Smith
- Iwan Soetiono
- Gerda Somers
- James and Joyce Sorenson
- Gary Squires
- St. John's Guild, St. John's Lutheran Church, Bloomfield
- St. John's Lutheran Church, Summit

Employees of Donald Bicking & Associates donated toys and holiday gifts for families in affordable housing.





Zion Lutheran Church of Clark's Vacation Bible School students donated backpacks to help make back-to-school a little easier for children in LSMNJ programs.

- St. Michael's Lutheran Church, Cherry Hill
- St. Peter Lutheran Church, Lambertville
- Fay Stafford
- Jane Stanuikynas
- Melanie and James Steinhart
- Louis and Frances Stief
- Nancy and Michael Stober-McCarthy
- Nancy Stokking-Perry
- C. Paul Strockbine
- Bruce S. Swanson
- Joann Szarzynski

T

- Christine Tani
- Georgia Terlaje
- The David and Marilyn Krupnick Foundation, Inc.
- The Graham Company
- The Lancaster Group
- The Lutheran Church of the Redeemer, Ramsey

- Christopher Thomas
- Gale Thompson
- Janet Thompson
- Shawn Thompson
- Thrivent Financial
- Harriet Tice
- Bernard J. Tiell
- Carl Tobiasen
- Karla Traficante
- Mark Trampe
- Trinity Lutheran Church, Tenafly
- Trinity Lutheran Church, Jersey City
- Truist Financial Corp.
- Mona M. Trump and William Wentz
- Nancy Truscott
- Kathleen Tully
- Richard and Elaine Tupy

U

- George and Susan Unverzagt

V

- Kenneth and Karen Van Dongen
- Cate Van Es

- Jennifer Van Es
- Liam Van Es
- Alex and Agnes Venanzi
- Sister Mary Ellen Verdon
- Brittany Vipham
- Dominic and Louise Vitale

W

- Diana Wallace
- Jean Wallace
- Jonathan Wallace
- Sheila Wargo
- Nancy Watt
- Mark Weingrad
- Lisa Weiss
- WELCA-Holy Trinity Lutheran Church, Rockaway
- WELCA-Spruce Run Lutheran Church, Glen Gardner
- WELCA-Zion Lutheran Church, Saddle River
- Kristine West
- Leonard and Joan West
- Lynden and Doris White

- Willard and Margaret Whitney
- Marianne Wiebalk
- Patricia Wilhelm
- Willam and Elaine Will
- Lois Williams
- John Winkelman
- Joseph and Elizabeth Witcofsky
- The Doris M. Witt Fund of InFaith Community Foundation
- Francis Wood
- WSFS Bank
- Robert and Pamela Wylie

Y

- Bradford and Mary Ann Young
- Constance Young

Z

- Katie Zandonella
- Lisa Zappetti
- Mark and Mary Zimpelman
- Arlene Zucker

We offer our condolences to our donors who have lost a loved one or friend and have chosen to honor their memory with a donation to Lutheran Social Ministries of New Jersey so that their legacy will endure. We are also grateful to receive gifts that mark special occasions and recognize loved ones, co-workers, and friends. The honoree is informed of the special tribute and the donor is thanked for his or her thoughtfulness.

Errors of commission or omission occasionally occur despite our efforts.

If we have erred, we apologize and ask that you notify us by contacting our office at (609) 699-4138.



SENIOR LEADERSHIP

Colleen P. Frankenfield, RN, NHA, AAS, BA, MS, JD
President & Chief Executive Officer

Sherry Outten, MBA, LNHA
Senior Vice President and Chief Operating Officer

Jeannine Richman, CPA, MBA
Senior Vice President & Chief Financial Officer

Krista Jacobs, PHR, SHRM-CP
Senior Vice President of Human Resources

MANAGEMENT TEAM

Tracey Cavacino, RN, MSM, NHA
Vice President of Clinical Services

Amabelle Daplin-Stech, MBA
Administrator, Homecare and Hospice Services

Marina Ferrer, MS, LNHA, CDP
Vice President & Executive Director, Crane's Mill Continuing Care

Maria Iavarone, MPA
Executive Director, Lutheran Senior LIFE PACE Program

Michael Kaizar
*Executive Director, Plant Operations,
Contracting & Communications*

Alison Lauck
Vice President, Philanthropy

Darlene Thurber, RN, BSA, CALA, LNHA
Executive Director, Journey Hospice

Karla Traficante
Vice President, Sales & Marketing

FOUNDATION BOARD MEMBERS

Andrea Bondy, Secretary

Christine Messina

Sharon Rohn Czebatar

Janice O'Neil

David Danton, Treasurer

Juhan Runne

Matthew Freimuth
**served 2021 and part of 2022*

Jennifer Sparks
**serves in 2022*

Rafael Haciski

Salvatore Veneziano

Brad Hildebrandt, Ex-Officio

BOARD OF TRUSTEES

Colleen Frankenfield,
EX-OFFICIO
President/CEO, LSMNJ

Charles Holmes

Rev. Tracie Bartholomew,
EX-OFFICIO
Bishop NJ Synod, ELCA

Edward P. Noble, TREASURER

Rev. Stephen Gewecke,
EX-OFFICIO
President, NJ District, LCMS

Juhan Runne, SECRETARY

Rafael Haciski

Larry Schumann

Rev. Bradford Hildebrandt,
CHAIR

Terry Shine

Rev. Dr. Anthony Steinbronn
Retired President, LCMS

Kenneth Van Dongen,
VICE CHAIR

Advancing THE MISSION

Juhan Runne has served on the LSMNJ Foundation Board as Chair since 2012. He has provided consistent and thoughtful guidance to the board and has been committed to developing funder relationships and advocating on behalf of LSMNJ.

Although Juhan remains on the Foundation Board, the role of Board Chair has been passed on to **Christine Messina**, who was appointed in early 2022. Messina, who is Vice President of local property damage remediation company allRisk Property Damage Experts, has been involved with LSMNJ's mission since 2010 through allRisk, her family business. She has served on the LSMNJ Foundation board since February 2020 and has been instrumental in sharing the organization's mission throughout South Jersey. "Sharing the stories of LSMNJ's impact is



Christine Messina

the key," Messina explains. "The spark happens through storytelling. As chair, I want to invite more people to join us in supporting the important work of LSMNJ."

The LSMNJ Foundation also welcomes two new board members: **Salvatore (Sal) Veneziano Jr.** is a Senior Project Manager for C&C Construction Management Inc. In this role, Sal manages multiple construction projects and is in charge of the North Jersey Division. He leads the team for successful design and construction of the senior living communities, consisting of memory care and nursing homes. **Jennifer M. Sparks** is Senior Vice President at Truist and oversees middle market banking for Truist's Delaware Valley/Lehigh Valley Region, based in King of Prussia, PA. She also serves on the Board of Directors for Covenant House of Pennsylvania, where she co-chairs the Governance Committee and is a member of the Development Committee, and The Mid-Atlantic Food Trade Organization, where she serves as Secretary, Chair of Community Outreach, and a member of Finance Committee.



Our Mission

Through the power of the Holy Spirit and in response to God's love as revealed in the Gospel, the mission of Lutheran Social Ministries of New Jersey is to serve those in New Jersey who hurt, who are in need, or who have limited choices.

Your need is our mission.®

LUTHERAN SOCIAL MINISTRIES OF NEW JERSEY
3 MANHATTAN DRIVE, BURLINGTON, NEW JERSEY 08016

LSMNJ.ORG | CRANESMILL.ORG | LIFELSMNJ.ORG | JOURNEYHOSPICENJ.ORG