





Dear Friends,

As we reflect on the last year and our emergence from the darkest days of COVID, I find inspiration in the 17th-century hymn, “Fling wide the door, unbar the gate,” written by German Lutheran minister and hymn

writer, Georg Weissel. Lutheran Social Ministries of New Jersey has been flinging wide the door since 1904, intent on serving those who hurt, are in need, or have limited choices. During the pandemic, we had to find inventive ways to open our doors—sometimes figuratively—but we did. And now, in our post-COVID reopening phase, it’s satisfying to know that we continue to provide affordable housing to improve the lives of those in need, help seniors to live their best lives, regardless of their care needs, initiate dialogue across each other’s cultures and backgrounds, and provide opportunities to volunteer and help others.

One takeaway message from the pandemic is that this is a group effort, for we cannot fulfill our mission without you. As you read through this year’s annual report, you’ll find evidence of this on each page, and I hope you recognize the impact you have. Whether you support us financially or through your generous donations of time and talent, your gifts are of the utmost importance. I would also like to thank our incredibly dedicated staff—those who work in our home office and those who are involved in our community outreach, hospice and home care, senior healthcare and retirement living, and affordable housing and community residential services. Together, we make a difference in the lives of others, and in doing so, we live Christ’s message more fully.

Thank you and be well!

Colleen P. Frankenfield,
President & Chief Executive Officer, LSMNJ

SENIOR LEADERSHIP

Colleen P. Frankenfield, RN, NHA, AAS, BA, MS, JD
President & Chief Executive Officer

Sherry Outten, MBA, LNHA
Senior Vice President and Chief Operating Officer

Jeannine Richman, CPA, MBA
Senior Vice President & Chief Financial Officer

Krista Jacobs, PHR, SHRM-CP
Senior Vice President of Human Resources

MANAGEMENT TEAM

Tracey Cavacino, RN, MSM, NHA
Vice President of Clinical Services

John Chapman, MBA, LNHA
Vice President, Home and Community Based Services & Special Projects

Maria Iavarone, MPA
Executive Director, Lutheran Senior LIFE PACE Program

Michael Kaizar
Executive Director, Plant Operations & Contracting

Allison Kuiken
Administrator, Homecare & Journey Hospice North

Alison Lauck
Vice President, Philanthropy

Denise Raymond, BSN, RN
Administrator, Journey Hospice South

Darren Seise
Vice President, Sales & Marketing

Hector Torres
Executive Director, Housing

Christopher “CJ” Williams, Jr., MBA, CDF, LNHA
Vice President & Executive Director, Crane’s Mill

FOUNDATION BOARD MEMBERS

Sharon Rohn Czebotar

David Danton, Treasurer

Rafael Haciski

Brad Hildebrandt, Ex-Officio

Christine Messina, Chair

Janice O’Neill

Juhan Runne

Jennifer Sparks, Secretary

Salvatore Veneziano

BOARD OF TRUSTEES

Colleen Frankenfield,
EX-OFFICIO
President/CEO, LSMNJ

Rev. Tracie Bartholomew,
EX-OFFICIO
Bishop NJ Synod, ELCA

Rev. Stephen Gewecke,
EX-OFFICIO
President, NJ District, LCMS

Rafael Haciski

Rev. Bradford Hildebrandt,
CHAIR

Edward P. Noble, TREASURER

Juhan Runne, SECRETARY

Terry Shine

Rev. Dr. Anthony Steinbronn

Kenneth Van Dongen,
VICE CHAIR



Programs & SERVICES

AFFORDABLE HOUSING

- Birchwood at Old Bridge Senior Residence
- Lutheran Senior Residence at Pennsauken
- Lutheran Social Ministries of Camden
- Mirota Senior Residence
- Mt. Olive Manor I & II
- Peapack-Gladstone Family Housing
- Project Home
- South Plainfield Senior Residence
- Sterling Village*
- West Hanover Street Apartments

COMMUNITY OUTREACH SERVICES

- Community Engagement
- H.E.R.O.
- Immigration Legal Services
- Journey Hospice
- LSMNJ Disaster Recovery
- Lutheran Feeding Friends
- Lutheran Learning
- SpiriCare at Home

COMMUNITY RESIDENTIAL SERVICES

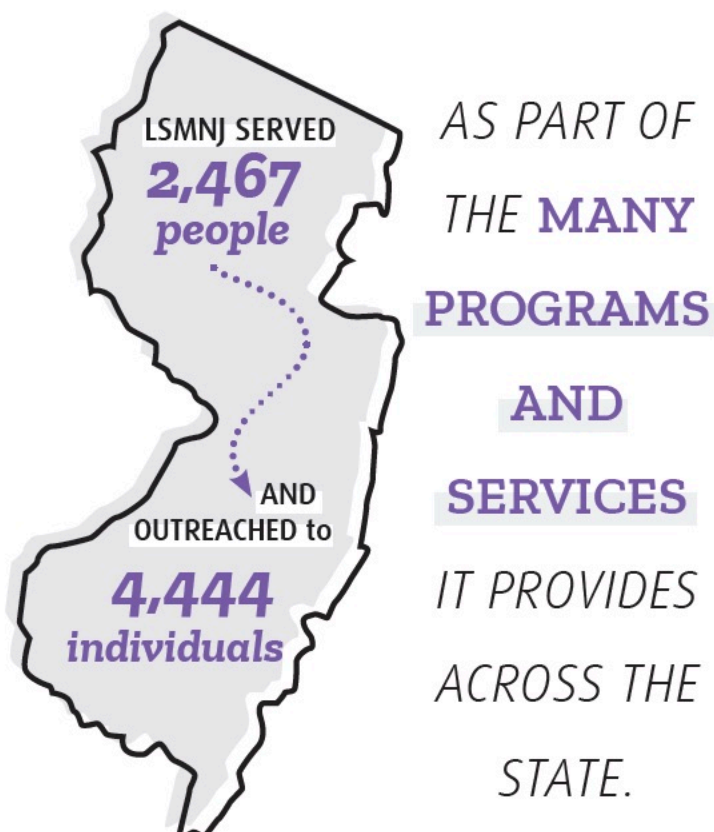
- Luther Haven

SENIOR HEALTHCARE & RETIREMENT LIVING

- Crane's Mill Continuing Care
- Lutheran Senior LIFE PACE Program at Jersey City

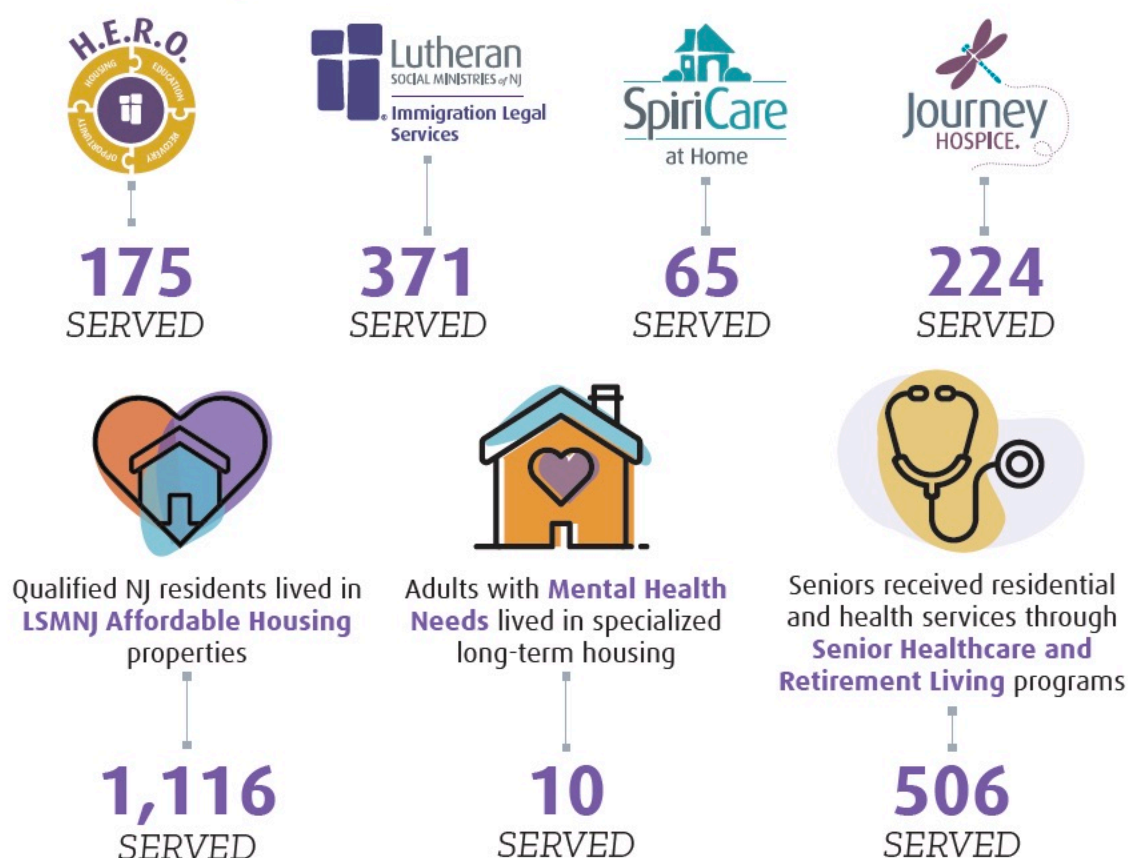
*Professionally managed by LSMNJ. All other facilities are owned and managed by LSMNJ.

PEOPLE SERVED in 2022



In 2022, through the gracious efforts of 152 individual volunteers and 45 groups, 3,282 volunteer hours were provided in support of LSMNJ's mission.

The lives of New Jersey residents were improved through community services such as:





Opening Doors Through Generosity and Support

REV. DR. ANTHONY J. STEINBRONN: FOSTERING WELL-BEING IN THE LIVES OF OTHERS

The Rev. Dr. Anthony J. Steinbronn is a familiar name in the Lutheran world. Rev. Tony retired as the District President of the New Jersey District -- LCMS in 2021. Before holding this position, he served as the New Jersey District's mission executive for nine years. A 1982 graduate of Concordia Seminary, St. Louis, Missouri, he served parishes in Nebraska, Indiana, and South Dakota. He earned two graduate degrees from Concordia Theological Seminary, Ft. Wayne—a Master of Sacred Theology in Luther Studies and a Doctor of Missiology degree in evangelism and mission communication. Rev. Tony also served as a field missionary and theological



Rev. Tony and Carol Steinbronn

educator among the Tswana people who reside in Botswana and western South Africa. His responsibilities called him to focus on forming leaders, authoring theological materials, and fostering indigenous church formation. Rev. Tony is a major LSMNJ supporter, donating to the organization since 2012, attending golf outings and Top Golf events, and kindly agreeing to remain on the LSMNJ Board of Trustees despite relocating.

Rev. Tony and his wife, Carol, are the parents of four grown children—Leah, Joseph, Joshua, and Jonathan. The couple, formerly of Howell, New Jersey, reside in a Lutheran retirement community in Oviedo, Florida, where they keep as busy as ever. Rev. Tony focuses on ministering to seniors, leading culture learning discussion groups, and helping with a vacant congregation; Carol devotes time to Bible study, choir, and their community's executive council.

To better understand Rev. Tony, it's helpful to know that he was raised by parents who modeled the importance of social work and social justice. His family, while living in Iowa, sponsored a Black family from Chicago in the late 1960s. During the summers of his college years, while working full-time at a mental hospital, he was able to interact with Vietnamese immigrants sponsored by his family's church after the Vietnam War. These formative experiences helped shape the man he would become.

For Rev. Tony, the Hebrew word shalom, in addition to meaning peace and offered as a greeting, has a deeper biblical context referring to the well-being of others. As he explains, shalom is inextricably tied to God's intentions for each of us as we grapple with religious, physical, financial, emotional, and social struggles. Even in retirement, he fosters well-being in the lives of others.

Thank you for your continued support of LSMNJ and may God continue to work through you and bless you, Rev. Tony.



PASTOR CHUCK ROMANOWSKI: WALKING HUMBLY WITH HIS GOD

LSMNJ thrives with help from those who hear the voice of God and respond in their daily lives. One such person is Charles Romanowski. Known affectionately as Pastor Chuck, he currently serves as interim pastor at Lutheran Church of the Holy Spirit (LCHS) in Manahawkin, New Jersey, where he continues his almost fifty-year dedication to addressing homelessness and food insecurity within the communities he serves. Under his pastoral care, LCHS, located too far away from our FITS walk to fight food insecurity, took it upon themselves to do a satellite walk, with strong support from the youth group. They started this initiative in 2022 and continued this year.

Born and bred in Philadelphia, PA, Pastor Chuck received his bachelor's degree from the University of Notre Dame and his master's degree from the Lutheran Theological Southern Seminary, the nation's second-oldest Lutheran seminary, in continuous existence since 1830. Before retiring (or so he thought) in 2018, Pastor Chuck served in three parishes, all in Southeastern Pennsylvania. In his last parish, St. Mark's in Pennsburg, he served amongst the Pennsylvania Dutch for 21 years. In August 2018, he and his wife, Kathy, a physical therapist, retired to their home in Cape May Court House, N.J., ready to embrace new routines. Not so fast! Within a month, Pastor Chuck was asked to serve as interim pastor at a parish almost an hour away from his home. He accepted and is likely to continue in this role through September 2024 as he helps lead the parish's vision process and oversees maintenance issues.

Pastor Chuck is quick to credit two mentors with setting him on his life's path: the late Robert Neumeyer, an assistant to the bishop at the time Pastor Chuck was at seminary, and Jim Shelton, a close friend who ran a homeless shelter and soup kitchen just outside of Philadelphia for many years. Drawing inspiration from scripture, Pastor Chuck has two passages that nourish him as he nourishes others:

Micah 6:8: "He has showed you, O man, what is good; and what does the LORD require of you but to do justice, and to love kindness, and to walk humbly with your God."; and

Matthew 25: 31-45, where the Lord explains the importance of feeding the hungry, clothing the naked, giving drink to the thirsty, and welcoming the stranger, noting, "As you did it to one of the least of these my brothers, you did it to me."

At Holy Spirit, Pastor Chuck continues to engage the community and encourage social justice. The parish operates a food pantry that is set up like a grocery store so families in need can select items in a way that allows them to maintain their dignity. A parish-owned property is rented out at cost for a needy family. A monthly Lego night engages youngsters and teens in the area. Indeed, throughout his ministry, Pastor Chuck, who has served on boards that address food insecurity, homelessness, and domestic violence, has inspired his congregations to answer God's call in whatever ways they can.

LSMNJ is grateful to have the support of Pastor Chuck and the LSHS congregation!

Thank you, and may God continue to bless you, Pastor Chuck!



STEVEN MCMICKLE: GARDEN STATE PAINTING & DESIGN

Steven McMickle, the founder and owner of Garden State Painting & Design in Verona, New Jersey, has been a stalwart LSMNJ supporter for almost two decades. Along with his talents in handling renovations at Crane's Mill at West Caldwell since its inception, Steve was our "High Roller" donor for casino night which benefitted Crane's Mill. He has also agreed to lead our donations to celebrate Crane's Mill's 25th anniversary. He was proud to comment on this year's annual report theme of "opening doors."



"Opening doors at Crane's Mill represents a fresh start and renewed connections post-COVID. Throughout our longstanding partnership with this exceptional continuing care retirement community, we have witnessed LSMNJ's commitment to providing a warm and inviting environment for the residents.

"Our team at Garden State Painting & Design is dedicated to enhancing the interior common spaces. Our recent renovations include expanding and enhancing the lounge areas, game room, art room, quilt room, library, and meeting rooms. The lounge areas are comfortable and inviting spaces that encourage social interaction and relaxation. The game room provides opportunities for friendly competition and amusement, the art room offers a dedicated space for residents to express themselves creatively, and the quilt room is designed for crafting and collaborative projects. The library serves as a hub of knowledge and exploration, while the meeting rooms offer versatile spaces for group discussions and events. These spaces now offer ample room for residents to gather, socialize, and engage in various activities.

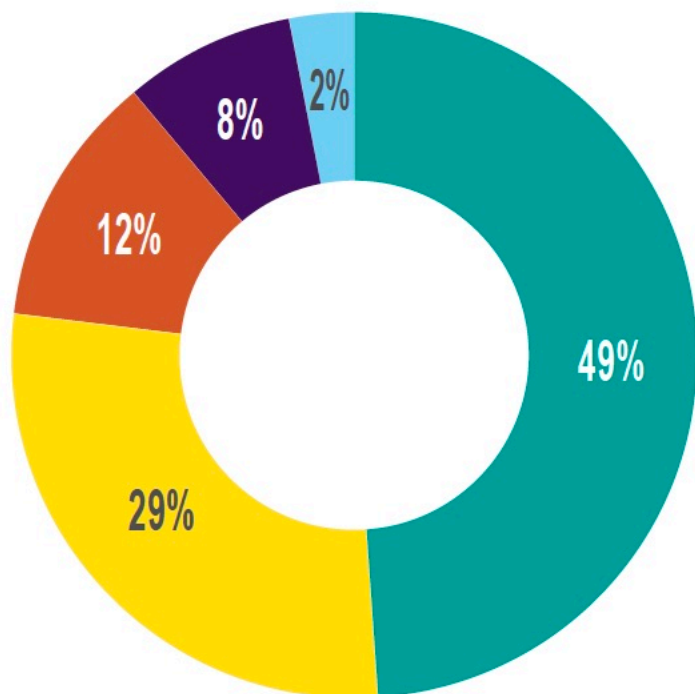
"Through our ongoing collaboration with Crane's Mill, we have witnessed the community's unwavering dedication to creating an inclusive and engaging environment for residents. The revitalized common spaces, achieved through our team's efforts, reflect this commitment, and provide residents with expanded and inviting areas to socialize, pursue their passions, and foster a strong sense of community. Garden State Painting & Design is honored to be part of this journey."

Steve's commitment to enhancing the lives of Crane's Mill residents is evident in his unwavering professional commitment as well as his generous financial support of our mission.

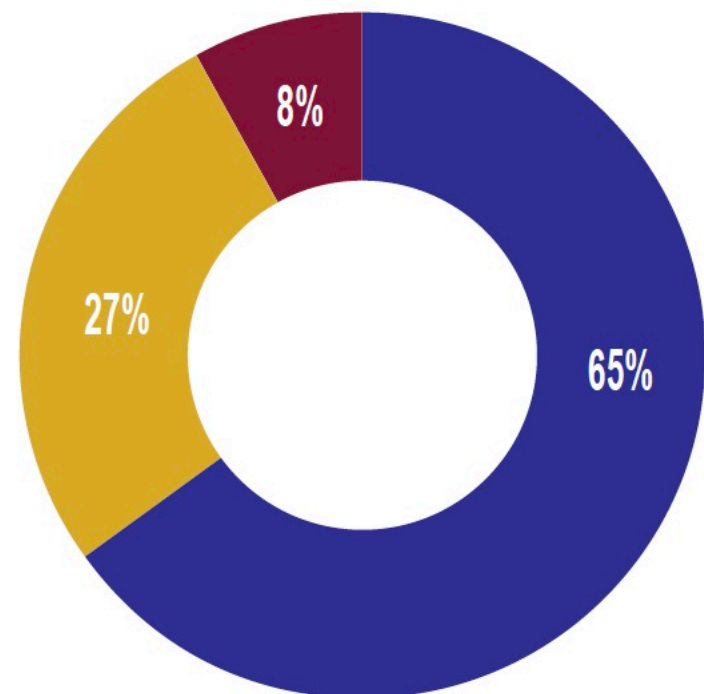
Thank you for being such a wonderful corporate partner, Steven!

Funding Our MISSION

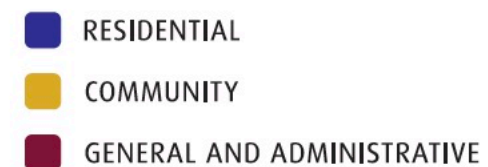
Lutheran Social Ministries of New Jersey operates as a 501 (c)(3) non-profit organization and is governed by a Board of Trustees which includes representatives from the clergy, churches, businesses, and other sectors of the community throughout New Jersey. We are committed to the responsible stewardship of all funds and programs. We offer this overview of revenue received and its use in support of our mission from January 1 through December 31, 2022.



TOTAL REVENUE:
\$51.4 MILLION



TOTAL EXPENSES:
\$59.8 MILLION



Lutheran Senior LIFE at Jersey City

Lutheran Senior LIFE at Jersey City remained flexible, adapting to the ongoing pandemic and continuing to provide excellent care and services to participants. Center attendance was expanded, and every eligible participant received at least one center day per week. Participants also received many of their services at home. The dining services team delivered more than 1,200 meals per month.

Journey Hospice

Journey Hospice continued an enhanced focus on holistic therapies, including massage and aromatherapy, to alleviate pain and agitation. Employees completed Level I Healing Touch coursework for the mind body and spirit, which features techniques designed to promote energy-based therapies.

Journey Hospice has achieved Partner Level III Recognition in the We Honor Veterans program, based on its commitment to "developing and strengthening relationships with VA medical centers and other Veteran organizations." Activities included education programs, organizational policies and procedures, and hospice-veteran partnerships.





Great Place To Work

Lutheran Social Ministries of New Jersey Certified as a Great Place to Work® for Fourth Straight Year



Great Place to Work Institute and its senior care partner Activated Insights have again honored Lutheran Social Ministries of New Jersey (LSMNJ) with certification as a Great Place to Work. The certification process involved surveying 100% of employees from across LSMNJ's programs and locations and evaluating more than 60 elements of team members' experience on the job. These included employee pride in the organization's community impact, the belief that their work makes a difference, and the feeling their work has special meaning. Rankings are based on employees' experiences, no matter who they are or what they do.

"LSMNJ staff members represent a variety of cultures, backgrounds, and beliefs," shared Colleen Frankenfield, President and CEO. "While we are a richly diverse group of people, we share firm common ground when it comes to hard work and commitment to our organization's mission."

"An overwhelming 92% of our employees say their work has special meaning and they are proud of where they work," continued Colleen. "This underscores the fact that our residents and participants are cared for by dedicated individuals that take pride in making a difference every day in the lives of those we provide care. That type of team member always goes above and beyond, and we are blessed to have those people as part of LSMNJ and they are the core of our mission and service."

GRANTS

Lutheran Social Ministries of NJ Foundation

The LSMNJ Foundation reported 42 churches throughout the state who supported our mission and an additional 17 corporate partners. The foundation received the following grants and donations:

- Evangelical Lutheran Church of America - \$75,000 to establish a support network for pastors helping the communities dealing with disaster relief.
- The Plainfield Foundation - \$15,000 to install security cameras at South Plainfield
- Friends of the Foundation for the Aging - \$7,300 for raised flower beds and patio furniture for Pennsauken senior residents.
- WSFS Bank - \$5,000 for general operating support
- The Wawa Foundation - \$1,000 to fight food insecurity



To make a gift to the Lutheran Social Ministries of New Jersey Foundation, visit www.lsmnj.org and click DONATE or use the enclosed envelope to send your donation.



Renovation Projects

Crane's Mill completed renovations to its Sycamore 2 building which includes independent living apartments. Updates included new flooring, lighting, wall coverings, furniture, and finishes throughout. Lounges were updated, a public restroom was added, and multiple activity rooms were created including those for games, art, and needlework.



Crane's Mill Touted by U.S. News & World Report, Best of Essex Awards

Crane's Mill continued to enhance its reputation in the area, winning the Best of Essex Award for Best Senior Living Community, and was named a Best Senior Living Community and Best Short-Term Rehabilitation Facility by U.S. News and World Report.





THANK YOU TO OUR 2022 Donors

Lutheran Social Ministries of New Jersey gratefully acknowledges the significant financial contributions and in-kind gifts made by individuals, organizations, and congregations across the state. Collectively, your contributions have a tremendous impact on families and seniors within our programs and allow us to continue to meet the needs of those we serve. This listing recognizes donors who provided gifts from January 1, 2022 to December 31, 2022.

A

AARP
Marilena Albulescu
Kristopher Almquist
Deanna Alvarado-Marin
Amazon Smile Foundation
Larry Ambrose
Judy and John Anderson
June Anderson
Margaret Anderson
Anonymous (3)
ARC Foundation
Roger and Nona Arnholt
R. Thomas and Janet Attack, Sr.
Atlantic Tomorrow's Office
Patricia Atwell-Carroll

B

Estate of O. Bonni Babson
Robert Baginski
Cyrus and Joyce Baltus
Cynthia and George Barth
Tracie Bartholomew and Daniel Whitener Jr.
Wayne and Jeannie Becker
Linda G. Bendel
Barbara Bernstengel
Edward and Joanne M. Berryman
Bethany Evangelical Lutheran Church, Palmyra
Stephen and Dolores Bianco
Carl Bloomfield
Carolyn Bodmer
Andre Bolukbas
Frank Boren and Alice Tucker

Estates of George and Olive Brauning
Lawrence and Mary Brodsky
Ann Brooks
Henry Buchy
Carl Buck
Herbert and Phyllis Budd
Max and Christine Burger

C

C & C Construction Management
Calvary Lutheran Church, Cranford
Sharon Campbell
Kimberly Capone
Anthony Cappuccio
Lucille Carey
Carl and Margaret Carlson
Earl and Shirley Carpenter
Richard Carter
Gene and Toby Jo Caven
Vincent Celenza
John and Kathy Chapman
Stacy Chittick
Christ Lutheran Church, Woodcliff Lake
Christ Lutheran Church, Whiting
Christ the King Lutheran Church, Ringwood
Victoria and Daniel Christian
Cloudscale 365
Estate of Gerda Cohn Charitable Trust
Nicola and Terry Colaneri
Rollin and Bonny Collins
Kerry Conley

Charles T. Connelly
Alayne Conner
Patrick Convery
Jonathan and Diane Cox
John Crable
Crane's Mill Residents' Association
Naomi Cressman
Sharon and Martin Czebotar

D

Kathleen D'Agui
David and Susan Danton
Amabelle Daplin-Stech
Janice Davis
Maxine Davis
Beverly Delaney
Kathleen Devlin
Antoinette Di Paula
Steve Dicker
Thomas Diedrich
Frank DiNapoli
Dorcas Guild-Our Savior Lutheran Church, Fair Lawn
Elizabeth Dorsi
John and Joan Drager
Harry L Dubel Residual Trust
Melissa Dulin
Louis and Carleen Dunkle
Michael and Deborah Dunne
Laura Dvorin

E

Janice Ellison
Julia Ely
Barbara Engler

Eleanor and Robert Enriquez
Rickie Erskine
Robert Espenschied
Evangelical Lutheran Church in America
Timothy and Noreen Ewing
Diana and Cartney Ezyk

F

Gregg Fairbrothers
Dr. Ahmad Farooq
Colleen Fay
Fred and Anne Fell
Richard Fell
Marina Ferrer
Arlene Ferrigno
Annemarie Fiechter
Linda Fieros
Bob and Kathy Fiscella
David Fowles
Christine Franco
Colleen and Joseph Frankenfield
Doris Freund
Beverly Friedman
Cheryl Friedman
Friends of the Foundation for Aging
Joe Frigiola

G

Theresa Galvin
Lorraine Gancher
Garden State Painting & Design Corp.
Sharman Geathers
Beth and Michael Gebhart



Wayne and Lisa Gess
 Stephen Gewecke
 Giordano, Halleran & Ciesla
 Godfrey Funeral Home
 of Ocean City
 Estate of Margaret Mary Gogarty
 Goldman Sachs & Co. LLC
 George Golia
 William Golpe
 Good Shepherd Lutheran Church,
 Somerville
 Good Shepherd Lutheran Church,
 Holmdel
 Good Shepherd Lutheran Church,
 Florham Park
 Good Shepherd Lutheran Church,
 Point Pleasant
 Anita Goodwyn
 Herman and Gertrude
 Gossenberger
 Grace Evangelical Lutheran Church,
 Phillipsburg
 Grace Lutheran Church, Teaneck
 Robert and Patricia Gray
 Dawn Green
 Lori Green
 June and Hans Greiser
 Barbara Griffa
 Jane Griffith
 Victor Groisser
 Ingrid Gutjahr

H

Rafael Haciski
 Eileen Hannigan
 Arlene Hard
 Joseph & Elizabeth Hare
 Anna A. Haroutunian MD
 Estate of Margorie Harper
 Marlene Harris
 Mary Jane Hastings
 Judith Hatke
 David and Carol Hauser
 Edna Hecht
 John and Dorothy Heflich
 Margaret Heglie
 Udo Heiman
 Nancy Heinze
 Frances Herbst

Michelle and Robert Herbster
 Bruce Hetzel
 Michael and Karen Hickey
 Patricia Hight
 Bradford Hildebrandt
 Michael and Kim Hock
 Charles and Patricia Holden
 Holy Communion Lutheran
 Church, Berlin
 Holy Spirit Lutheran Church,
 Manahawkin
 Holy Spirit Lutheran Church,
 Montville
 Holy Trinity Evangelical Lutheran
 Church, Manasquan
 Holy Trinity Lutheran Church,
 Hasbrouck Heights
 Holy Trinity Lutheran Church
 of Union, Scotch Plains
 Kelley F. Home
 Hope Lutheran Church, Freehold
 Marie A. Huber
 David and Michelle Hughes
 Estate of Ruth L. Huysman
 Priscilla M. Hyde

I

Maria Iavarone
 Investors Foundation

J

Krista Jacobs
 Otto and Gloria Jacobson
 Erna Jaklitsch
 Jann and Monica Janes
 Doris Jankowicz
 Susan Jerauld
 Mary and Mark Johannesen
 Philip Jones

K

Jill Kaiserman
 Michael Kaizar
 Robert Kammerer
 Kamran Karimov
 Richard and Alison Karl
 Kathe Kasten Charitable
 Remainder Trust
 Heather Kato
 KDA Architects
 Estate of Virginia Kirczow



Beth Gebhart, Director of Community Relations and Volunteers, was recognized by LeadingAge NJ/DE for Providing Excellence in Community Service. Beth is pictured with Sherry Outten, LSMNJ's Senior Vice President & COO, and James McCracken, President & CEO of LeadingAge NJ/DE.

David Kobrick
 Joseph and Anne Koch
 Susan Koeppen
 Estate of Emilie B (A. Richard)
 Kohler
 Lois P. Kopf
 William and Joan Kramer
 Davis and Laura Kropa
 Edward and Holly Kropinack
 James Kuder
 John and Mary Kunkel
 John and Elsa Kunna

L

George and Carol Labadie
 Chris Lacy
 Doris Lail
 Alison and Ron Lauck
 Donna Lauck
 Mary Lehmann
 John and Ashley Lentini
 Carol Lerner

Joan Liljegren
 Living Waters Lutheran Church,
 Ringoes
 Logan Memorial Presbyterian
 Church, Audubon
 Lutheran Womens Missionary
 League

M

John Macciocca
 Cynthia Mackalonis
 Genevieve Mager
 Denise Mahoney
 Carl and Catherine Malmstrom
 Renato Manalo
 John and Regina Mapes
 Steve and Kim Marcus
 Steven Marusky
 Bernice Mayer
 Joe Mazzoni
 Douglas McCabe
 James and Kerry McGuire



Consuela “Peaches” McKinley
Frank and Catherine McMahon
MedRehab Alliance, LLC
Thomas and Joanne Meeker
Janet Mehl
Irving Mender
Natalie Mendez
Christine Messina and
the Coley Family
James and Kim Millar
Judy Miller
Millville Women’s Club
Joseph and Elaine Molnar
Susan Mota
David and Patricia Munyan

N

Robert Neel
Regina Neiman
Linda Nelson
New Jersey Synod of the ELCA
Neil and Aimee Nilsen
NJ District, Lutheran
Church-Missouri Synod
NJM Insurance Group
Edward and Karen Noble
Nutrition Management
Services Company

O

Theresa and Sheldon Oakley
Graham
Joann Olsen
Janice O’Neil
The Harold A. and Katherine K.
Ott Memorial Fund II of Thrivent
Charitable Impact & Investing
Our Redeemer Lutheran Church,
Fords
Our Savior Lutheran Church,
Fair Lawn
Our Saviour Lutheran Church,
Pompton Plains
Sherry Outten

P

Antonio Paez
Peggy Pancari
Peter and Cathy Paprzycki
Frances Parodi
Anthony Passarelli
Leonila Paunil Levine
Charles and Betty Paxson
Pauline Payne
Joe Pellecchia
Norene A. Pennock
Linda Perry

Noel M. Peters
Joy Petzinger
PFM Asset Management
Philadelphia Foundation
Reinhard Piater
Pinelawn Cemetery Land
Purchase Fund
Rhonda and Charles Pisano
Gary and Elaine Platt
Fritz and Doris Plenefisch
Stephen Pogust
Daniel and Marilyn Prado
Premier Energy Group, LLC
Prince of Peace Lutheran Church,
Princeton Junction
William and Marsha Proehl

Q

Arthur and Meta Querns

R

John and Rose Rachel
Natalie Rachelson
Thomas and Laura Ragusa
Arthur Ranges
Estate of Doris M Rapp
John and Kathleen Reemmer
Lakiya Reid

Bernadette Reidy
Carl Ressler
Ashley Richman Ebrahimi
Jeannine Richman
Martha Rimathe
Robert and Carol Ritter
Randy Ritzer and Annamarie
Camporeale
RMS Graphics, Inc.
Andrea Robinson
Charles B. Robison
Juan Rodriguez
Chelsea Rojas
Roma Bank Community Foundation
Steve Romano
Craig Roscoe
Paul I. Rosenberg
Barbara Rucker
W. Hollis Rulon
Juhan and Jeanne Runne
Louis and Carolyn Russo

S

Charlotte Santilli
Chris Saroka
Dennis and Debra Scanlon
David P. Schad



Crane’s Mill residents Udo Heiman and Cheryl Friedman put their “Feet in the Street” at LSMNJ’s annual walk to fight food insecurity.



Ede Lou Schaertel
Robin Schloesser
Lois Schnell
David and Eileen Schoenherr
Steve Schultz
Lawrence and Linda Schumann
Susan and David Sereni
Mayank Sharma
George F. Sheer
Shehadi Commercial Flooring
Carol Sherman
Terry and Georgina Shine
William Slade
Frederick Smith
Solar Landscape
James and Joyce Sorenson
Jennifer Sparks
Spruce Run Lutheran Church,
Glen Gardner
Gary Squires
St. John's Lutheran Church, Summit
St. Michael's Lutheran Church,
Cherry Hill
St. Peter Lutheran Church,
Lambertville
Martin and Lois Stanczak
Anthony Steinbronn
Melanie and James Steinhart
Louis and Frances Stief
Nancy and Michael
Stober-McCarthy
Nancy Stokking-Perry
C. Paul Strockbine
Marla Sullivan
Bruce S. Swanson

T

Peter Talbot
Mike and Debra Tedesco
The Graham Company
The Lancaster Group
The Lutheran Church of the
Redeemer, Ramsey
The Plainfield Foundation
The Senior Company
The Wawa Foundation, Inc.
Christopher Thomas
Shawn Thompson
Thrivent Financial
Karla Traficante
Nicholas Travers
Trinity Lutheran Church, Tenafly
Trinity Lutheran Church, Jersey City
Mona M. Trump and William Wentz
Trust Under Will of John G Areson

V

Kenneth and Karen Van Dongen
Jenn and Billy Van Es
Liam Van Es
Kimberly Varalli
Alex and Agnes Venanzi
Salvatore and Renee Veneziano
Sister Mary Ellen Verdon
Vineland Rotary Club

W

Howard G. Wachenfeld
Diana Wallace
Yvonne Walton
Sheila Wargo
Nancy Watt



LSMNJ Camden resident Arline Lewis enjoys a handmade Valentine courtesy of the community's staff.

WELCA-Zion Lutheran Church,
Saddle River
Cheryl White
Lynden and Doris White
Patricia Wilhelm
Christopher Williams
Theresa Williams
John Winkelman
The Doris M. Witt Fund of Thrivent
Charitable Impact & Investing

Francis Wood
WSFS Bank

Y

Bret and Carol Yates
Bradford and Mary Ann Young

Z

John and Holly Zahradnick
Zion Evangelical Lutheran
Church of Clark

We offer our condolences to our donors who have lost a loved one or friend and have chosen to honor their memory with a donation to Lutheran Social Ministries of New Jersey so that their legacy will endure. We are also grateful to receive gifts that mark special occasions and recognize loved ones, co-workers, and friends. The honoree is informed of the special tribute and the donor is thanked for his or her thoughtfulness.

Errors of commission or omission occasionally occur despite our efforts.

If we have erred, we apologize and ask that you notify us by contacting our office at (609) 386-7171.

GET SOCIAL WITH US

We love to interact with friends and supporters from across the state. Many of our programs have their own social media presence across several channels. 'LIKE' and 'FOLLOW' the programs you enjoy, so you can connect with us all year long. **Here are some of our most popular posts from 2022.**



Journey Hospice NJ

November 22, 2022

Whenever possible, the Journey Hospice team tries to fulfill their patients' final wishes. We recently had the chance to grant One More Journey in Cape May.

Our patient, Bernadette "Bunny" Aftanis, lost her husband one year ago in October. She wanted to hold a memorial for him on the beach, one of their favorite places. Her son, Justin, daughter-in-law, Dawn, and other family members joined Bunny at Cape May Beach. They created a wreath of red, white and blue flowers, and after reciting prayers and sharing some special memories, the wreath was sent out to sea by her son.

The team at Journey was thrilled to be able to help Bunny and her family enjoy this extraordinary moment together. We arranged for and provided medical transport and accompanied the family to the beach, so medical support was there if needed.



Lutheran Social Ministries of New Jersey

August 11, 2022

Thank you to Living Waters Lutheran Church in Ringoes and Christ Lutheran in Woodcliff Lakes for supplying backpacks and school supplies for LSMNJ children. This car load went to Project Home in Jersey City!

If you would like to donate school supplies to fill backpacks for LSM Children, please see the list of supplies below and contact Beth Gebhart at bgebhart@lsmnj.org about how you can help.



Lutheran Social LIFE at Jersey City – A PACE Program

September 30, 2022

Thank you to all the Lutheran Senior LIFE participants and staff members who helped make #NationalPACEMonth a fantastic time!

Everyone met at the Center to give this special month a tasty send off--they enjoyed cake and ice cream, and received fun gifts including Lutheran Senior LIFE t-shirts!

Thank you for following along, and we look forward to staying healthy and having fun every month of the year!



Crane's Mill

November 2, 2022

Crane's Mill employees enjoyed a colorful and tasty afternoon celebrating Cultural Day. This special program allowed staff members the opportunity to socialize and better understand each other's unique cultural traditions.

Staff members presented traditional dishes, explained the significance of heirlooms and souvenirs, and even modeled traditional clothing and style of dress.



Lutheran
SOCIAL MINISTRIES of NJ

Our Mission

Through the power of the Holy Spirit and in response to God's love as revealed in the Gospel, the mission of Lutheran Social Ministries of New Jersey is to serve those in New Jersey who hurt, who are in need, or who have limited choices.

Your need is our mission.®

LUTHERAN SOCIAL MINISTRIES OF NEW JERSEY • 3 MANHATTAN DRIVE, BURLINGTON, NEW JERSEY 08016

LSMNJ.ORG | CRANESMILL.ORG | LIFELSMNJ.ORG | JOURNEYHOSPICENJ.ORG